



EHW200H-2Z

EHW200H-2Z

Basic Technical Parameters (at normal conditions)

Electric Parameters			
Contact Arrangement	DPDT-Changeover	Instantaneous maxi (closing) current	7Ie, ≤ 1s
Rated voltage of contacts (DC)	≤ 48V	Insulation resistance(MΩ)	≥ 100
Rated current of contacts (A)	200	Dielectric withstand voltage	1500V,p.f. 1min, no breakdown
Voltage drop on contacts(mV)	≤ 100	Electric cycles (10 ⁴)	≥ 2
Coil voltage specification(DC)	12V, 24V, 48V, 72V etc	Mechanical cycles (10 ⁴)	≥ 30
DC power consumption of coil (W)	≤ 24W	Temperature rise on outgoing terminal	≤ 65
Pickup voltage(DC)	≤ 70%Us	Temperature rise of coil(K)	≤ 85
Release voltage(DC)	≥ 5%Us; ≤ 40%Us	Insulation grade of enameled wire	Class B (130°C)
Pickup time(ms)	≤ 50	Material of contact	AgCuO(10)/Cu
Release time(ms)	≤ 50	Working duty	Continuous operating duty
Mechanical/Ambient Conditions			
Torque of outgoing terminal on contact M8(N.m)	≥ 9.0N appropriate	Protection grade	IP50
Coil wiring insert(mm)	≥ 0.8	Mounting methods	Freely
Working temperature	(-25~+55)°C	Vibration	Sine shock: 2.5g, (5-50) Hz
Mounting altitude	≤ 2Km	Impact	50g, 11ms(Half sine)
Conversion Table for Coil Specification(20°C)			
Voltage(V)	Coil resistance(1±10%)Ω	Voltage(V)	Coil resistance(1±10%)Ω
12	6.0	60	150.0
24	24.0	72	216.0
48	96.0	80	266.7
Quality management, safety certificate			
3C	2013010304660516	ISO9001:2008	20217Q20112R0S
TUV	15038561		
CE	VT07085562		

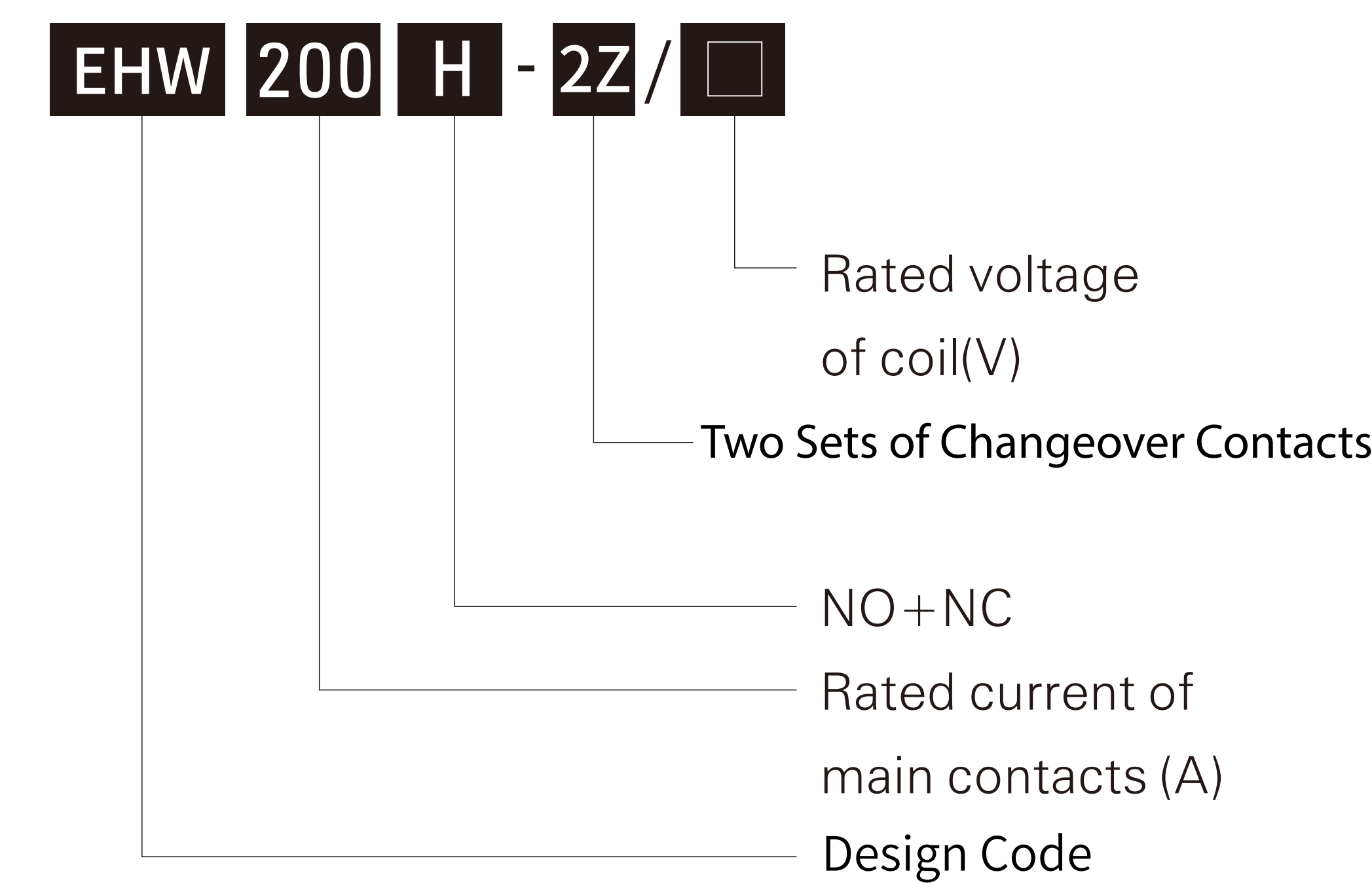
Application

The products are mainly used to control switching on/off of power supply of storage battery car, electric forklift, electric winch, electric car, excavator, air conditioner in vehicle, power source for communication facility.

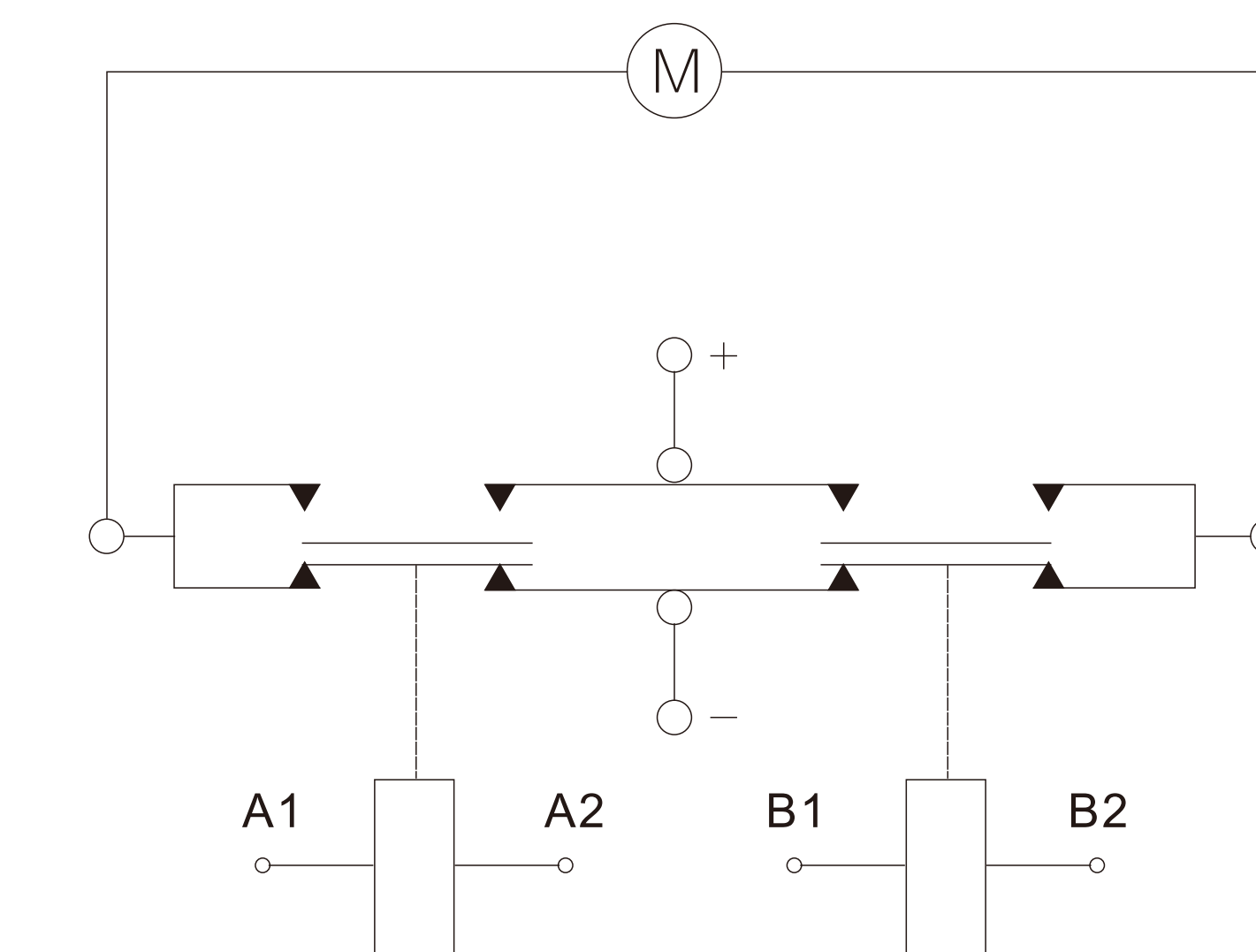
Ordering Notice

For example: EHW200H-2Z/12V
The DC contactor of main contact is commutation, rated voltage not more than DC48V, current 200A, coil voltage is DC12V

Model and Meanings



Electric Wiring Diagram



Outline and Mounting Picture

