



## EFS AC690V / DC500V series

- ☢ Rated Voltage: AC690V/DC500V
- ☢ Rated Current: 20–630A
- ☢ Interrupting: AC80kA/DC50kA
- ☢ Standard: IEC 60269–4
- ☢ Class of Operation: aR

Dimensions—mm

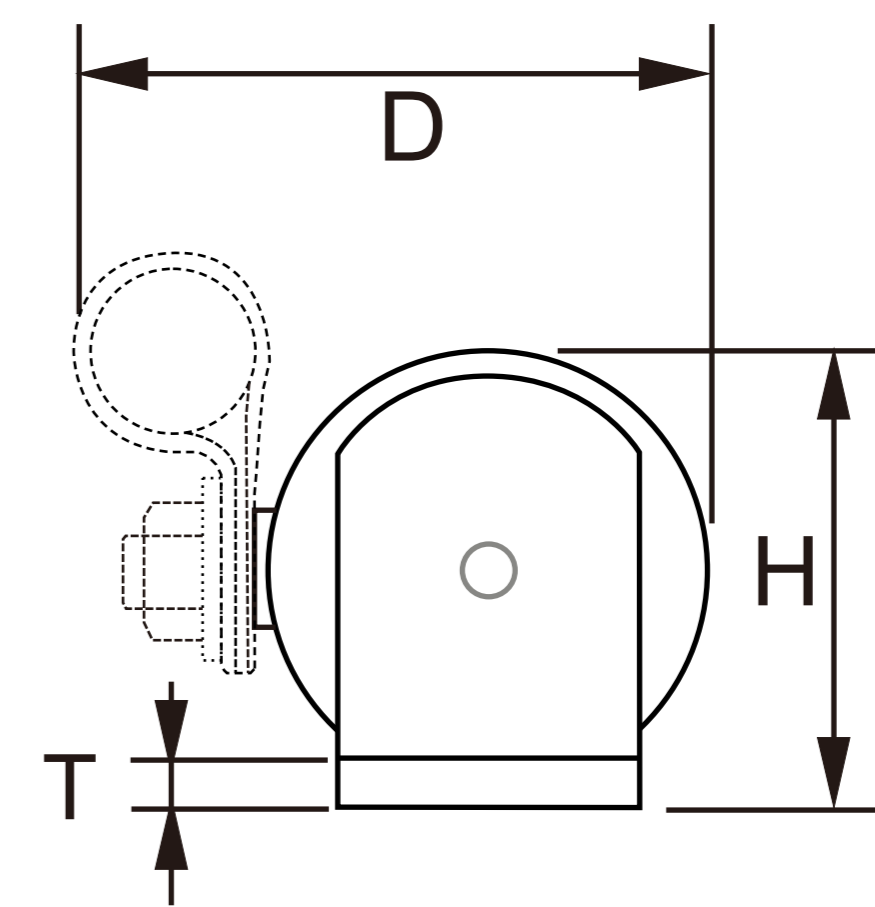
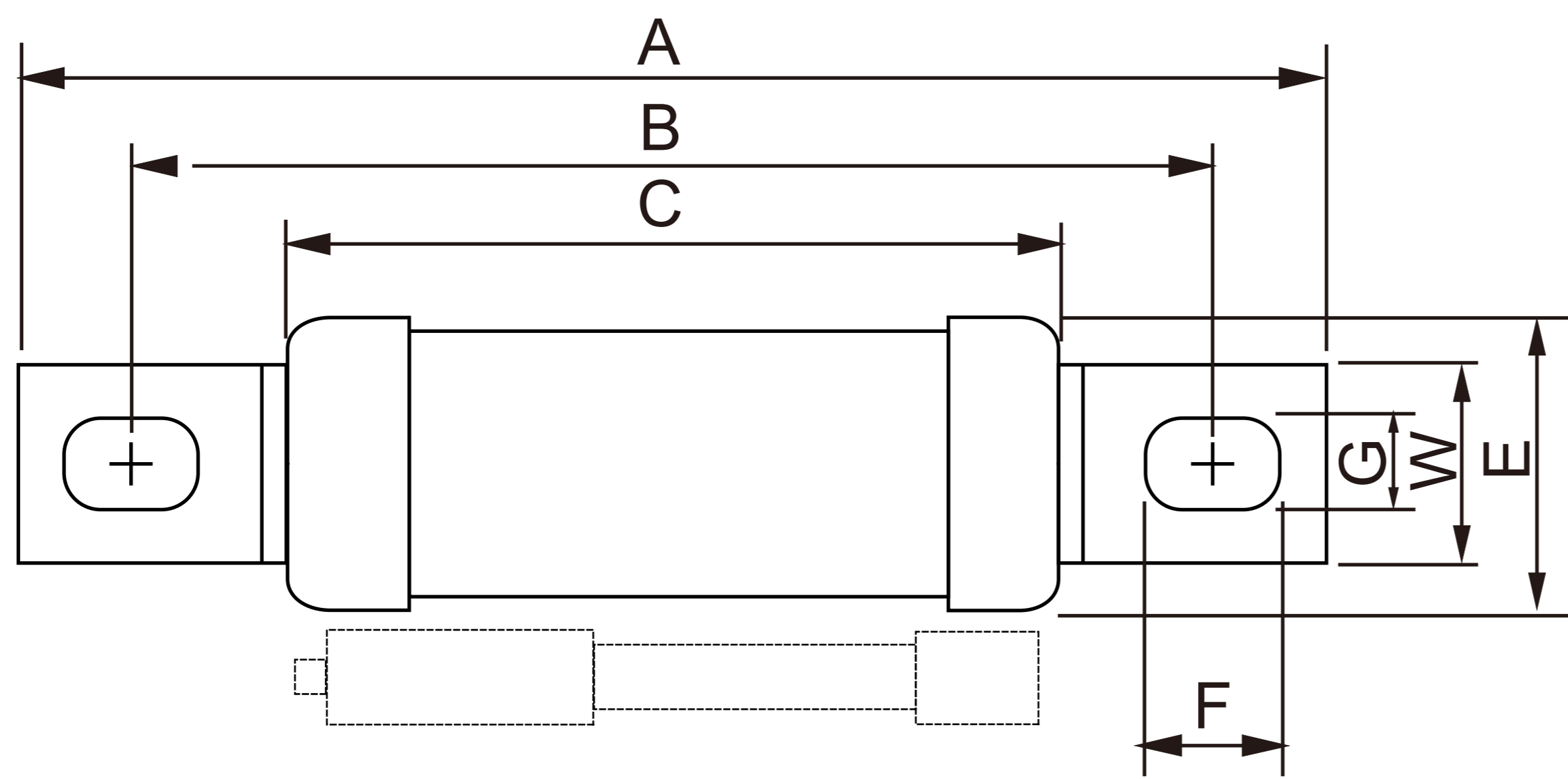


FIG 1

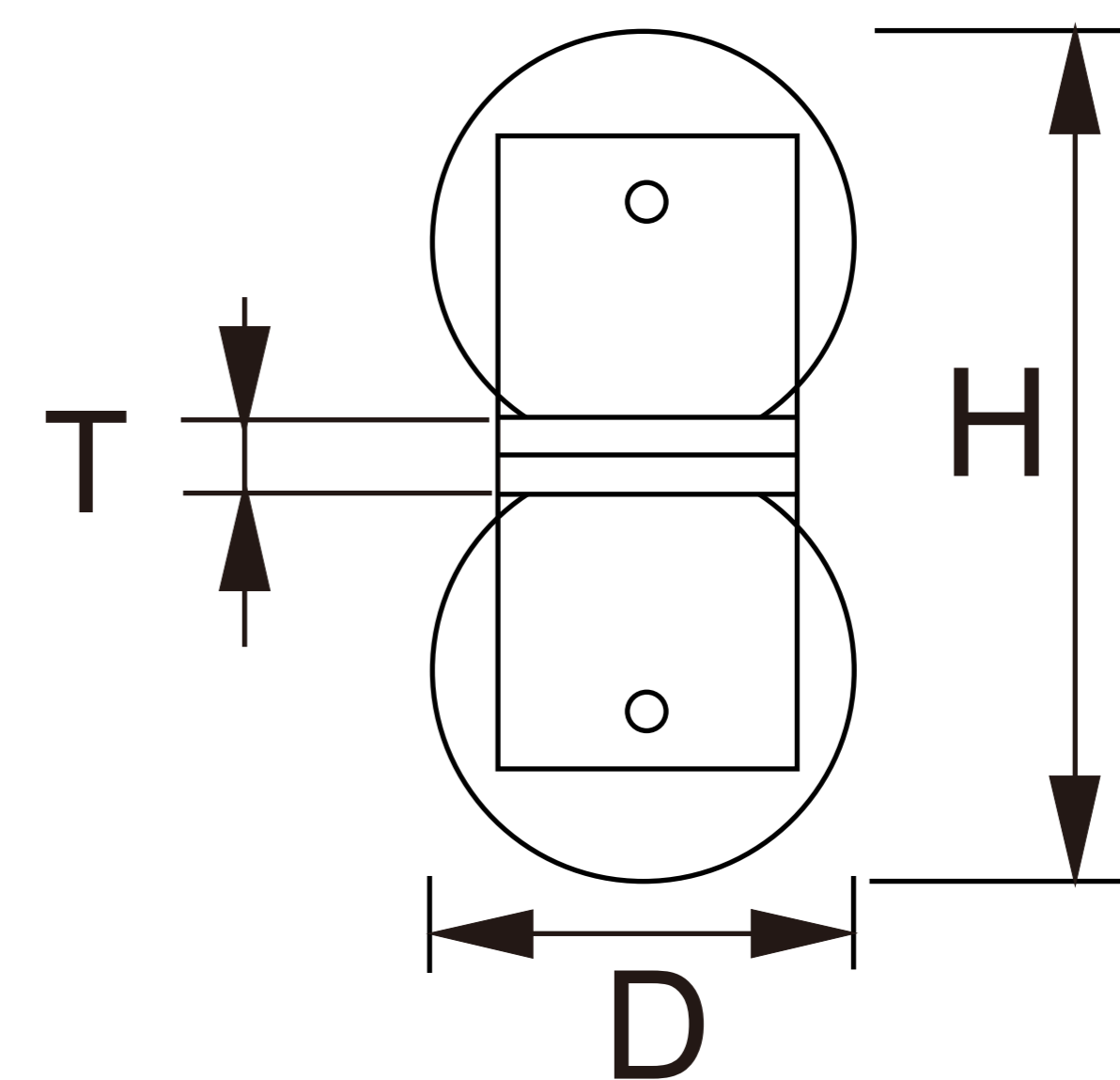
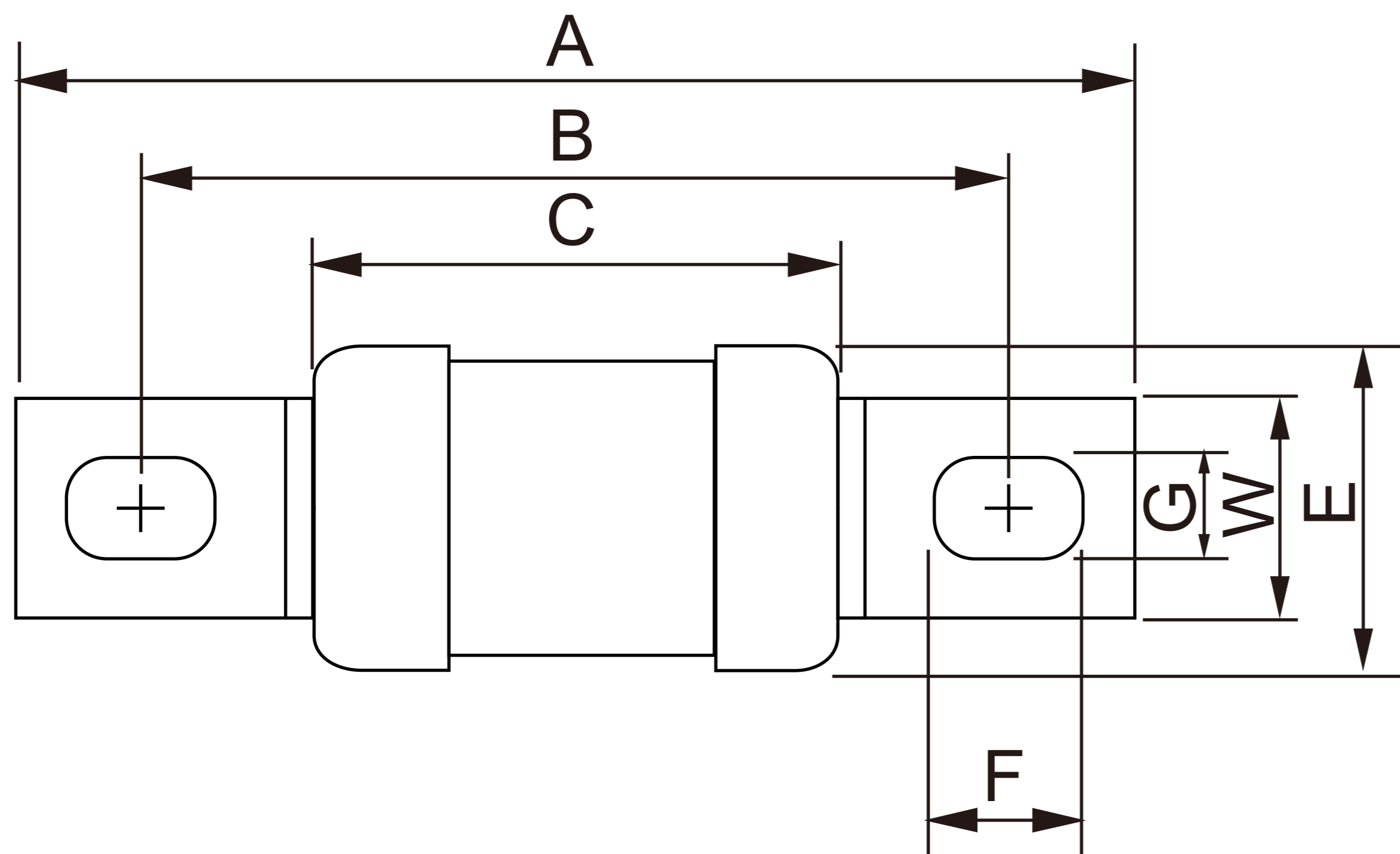


FIG 2

Product No.	Rated Current	Dimension																				
		A	B	C	D	E	F	G	H	W	T	FIG										
EFS-18-20	20	78	61.5	47	28 (max)	18	9.5	6.5	18.5	12	2	1										
EFS-18-25	25																					
EFS-18-32	32																					
EFS-18-40	40																					
EFS-18-50	50																					
EFS-18-63	63																					
EFS-18-80	80																					
EFS-18-100	100																					
EFS-18-125	125																					
EFS-24-160	160	97.5	75	49	33.5 (max)	24	16	9.2	25	20	2											
EFS-24-200	200																					
EFS-24-250	250																					
EFS-31-280	280	105	77.5	49	41 (max)	31	16	10.3	36	25	3											
EFS-31-315	315																					
EFS-31-350	350																					
EFS-38-400	400	106.5	79.5	55	48 (max)	38	16	10.3	42	25	3											
EFS-38-450	450																					
EFS-38-500	500																					
EFS-38-560	560																					
EFS-38-630	630											106.5	79.5	54.5	38	38	16	10.3	82	25	6	2