



EFS AC690V / DC500V series

Rated Voltage: AC690V/DC500V

Rated Current: 20–630A

Interrupting: AC80kA/DC50kA

Standard: IEC 60269–4

Class of Operation: aR

Dimensions—mm

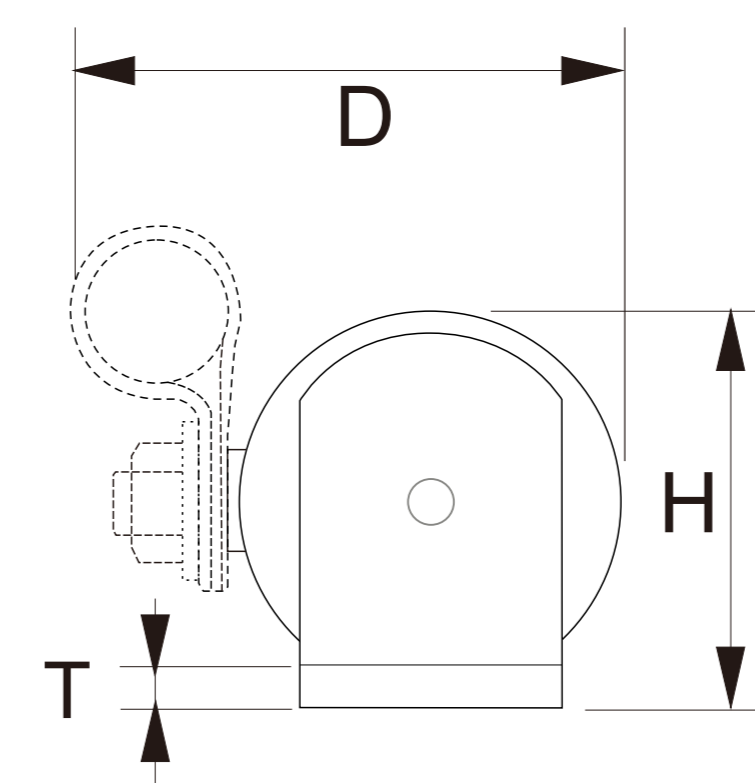
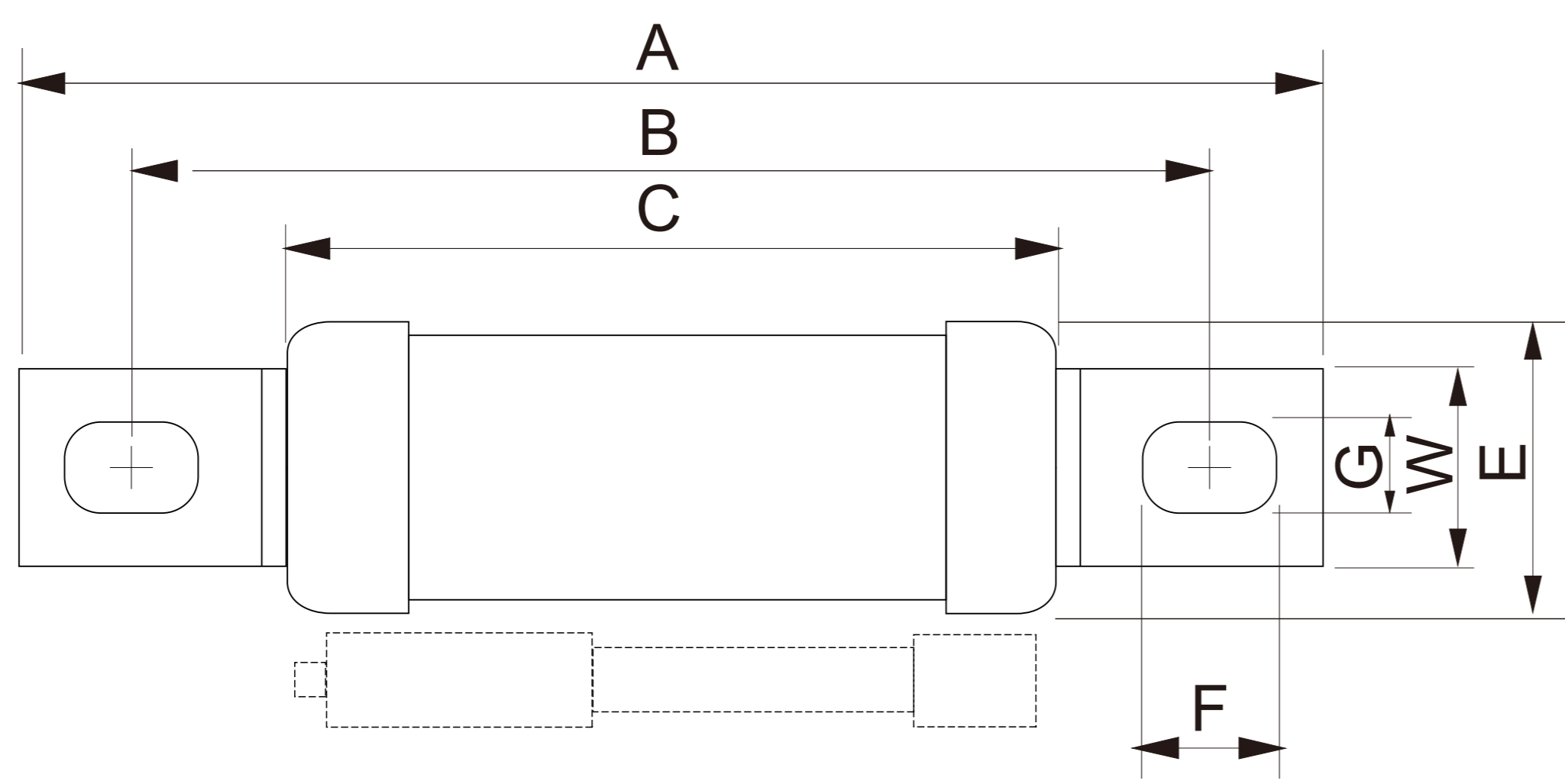


FIG 1

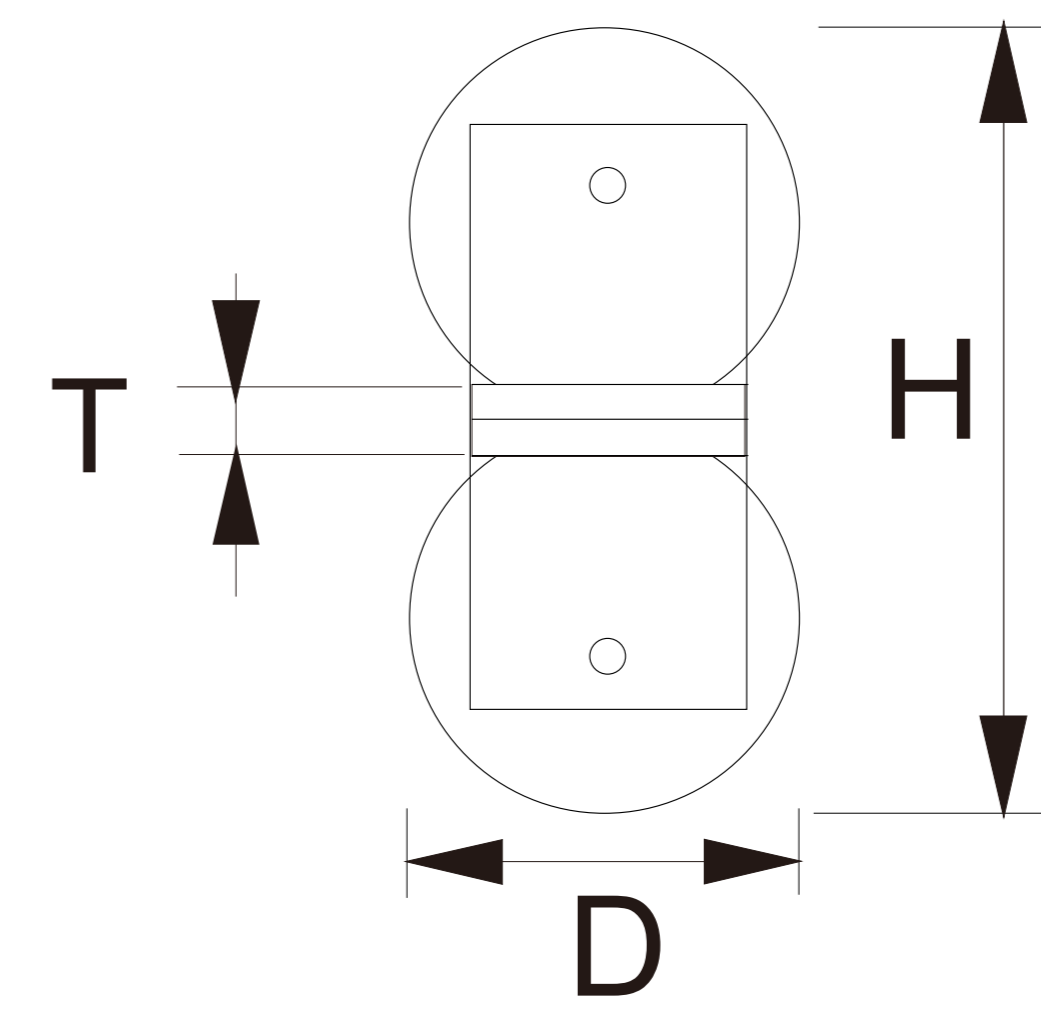
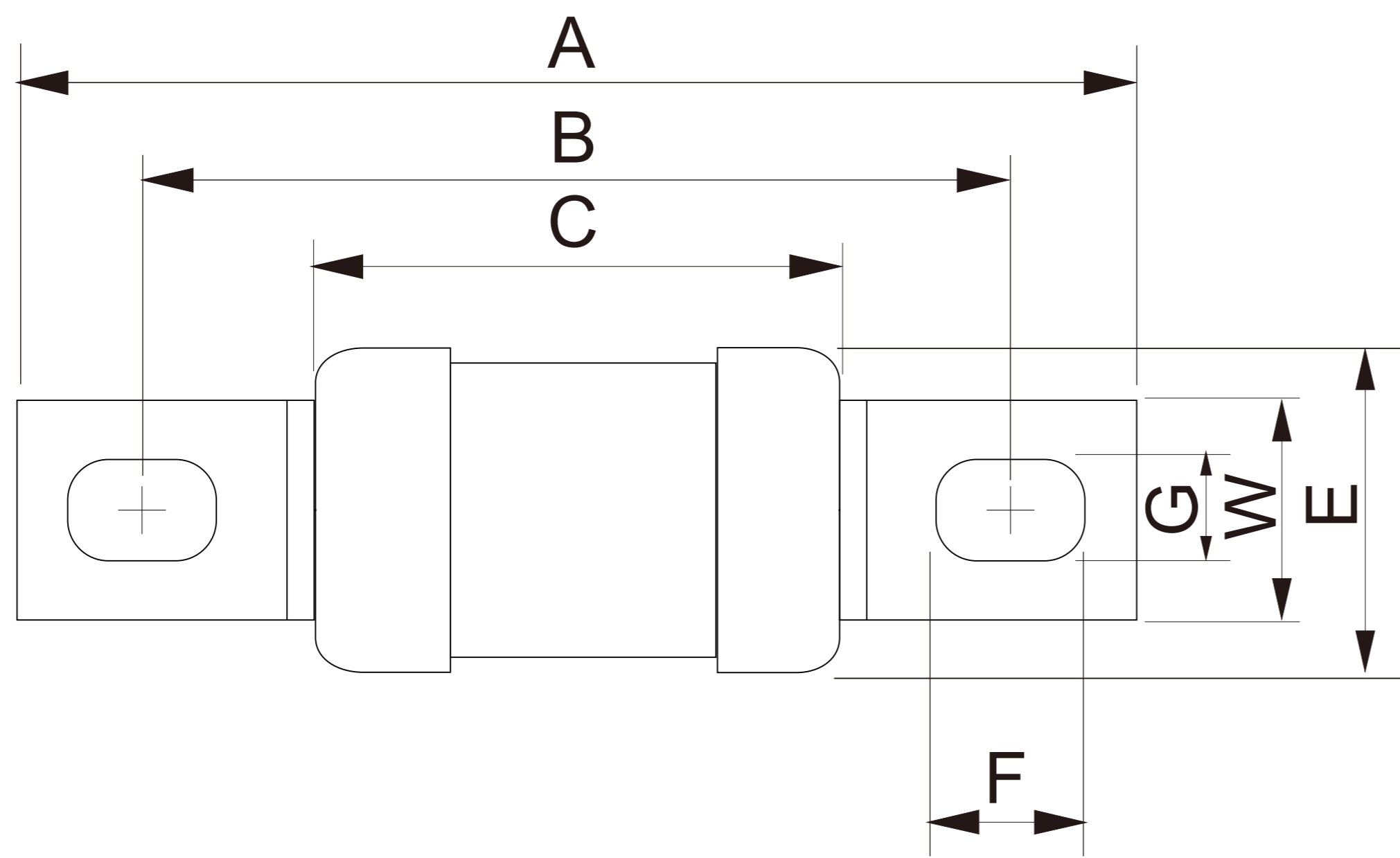


FIG 2

Product No.	Rated Current	Dimension										
		A	B	C	D	E	F	G	H	W	T	FIG
EFBS-18-20	20	78	61.5	47	28 (max)	18	9.5	6.5	18.5	12	2	1
EFBS-18-25	25											
EFBS-18-32	32											
EFBS-18-40	40											
EFBS-18-50	50											
EFBS-18-63	63											
EFBS-18-80	80											
EFBS-18-100	100											
EFBS-18-125	125											
EFBS-24-160	160	97.5	75	49	33.5 (max)	24	16	9.2	25	20	2	
EFBS-24-200	200											
EFBS-24-250	250											
EFBS-31-280	280	105	77.5	49	41 (max)	31	16	10.3	36	25	3	
EFBS-31-315	315											
EFBS-38-350	350											
EFBS-38-400	400	106.5	79.5	55	48(max)	38	16	10.3	42	25	3	
EFBS-38-450	450											
EFBS-38-500	500											
EFBS-38-560	560											
EFBS-38-630	630											
		106.5	79.5	54.5	38	38	16	10.3	82	25	6	2