

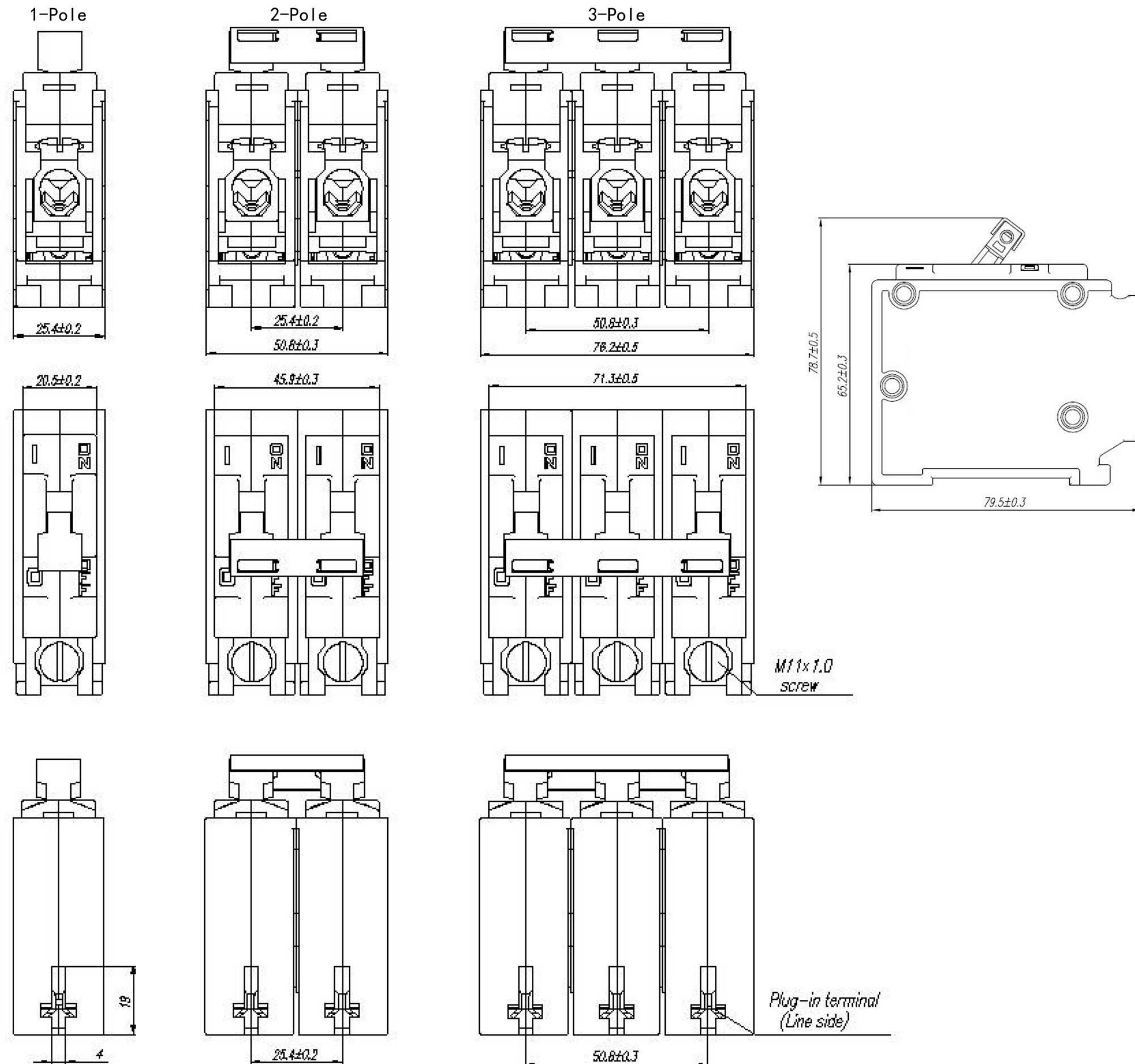
B3S



Characteristic

- Current rating: 1A ~ 125A
- Rated insulation voltage U_i (V): 500V
- Rated impulse withstand voltage $U_{imp}(V)$: 4kV
- Electrical lifecycle: 6000
- Mechanical lifecycle: 10000
- Poles: 1pole, 2poles, 3poles
- Standards: GB/T 14048.2 / IEC 60947-2, UL489
- Application: computer and its peripheral equipment, industrial automation equipment, telecommunication equipment, UPS equipment, railway locomotive, marine electrical system, elevator control system and mobile power supply equipment.

Dimensions



Delay Type	1In	1.25In	1.5In	2In	4In	6In	8In
H1,Short	NO Tripping	0.5~6.5	0.3~3	0.1~2	0.03~0.5	0.01~0.25	0.004~0.1
H2,Medium	NO Tripping	2.0~60	1.2~40	1~20	0.15~2	0.04~1	0.008~0.5
H3,Long	NO Tripping	80~700	40~400	15~200	2~20	0.23~9	0.018~0.55
A1,Short	NO Tripping	0.7~12	0.35~7	0.13~3	0.03~1	0.01~0.3	0.01~0.15
A2,Medium	NO Tripping	10~120	6~60	2~20	0.2~3	0.02~2	0.015~0.8
A3,Long	NO Tripping	50~700	30~400	10~200	1.5~20	0.4~10	0.013~0.85

Specification and code implication(for selection)

B3S 1-100.0/240S - 170B - A2 - B1 - E XXXXX
 1 2 3 4 5678 9 10 11 12

No	Specification	Code		
1	Series	B3S		
2	Actuator	1: Handle, one per pole, 5: Handle, one per multi pole unit.		
3	Rated Current	1A~125A		
4	Rated Voltage	120:AC120V, 240:AC240V, 240S:AC120V/240V		
5	poles	1:1P, 2: 2P, 3: 3P,		
6	Terminal Type	7: Fast push-in		
7	Barriers	0: Nil		
8	Circuit type (Remark 1)	A: Switch only (No coil), B: Regular cascaded current circuit		
9	Delay type (Remark 2)	A1: AC short delay, A2: AC medium delay, A3: AC long delay, D1: DC short delay, D2: DC medium delay, D3: DC long delay, H1: DC short delay, high surge, H2: DC medium delay, high surge, H3: DC long delay, high surge, G1: AC short delay, high surge, G2: AC medium delay, high surge, G3: AC long delay, highsurge		
10	Handle Colour	Handle	Handle colour	Legend colour
		B1	Black	Write
		B2	Write	Black
	B3	Green	Write	
11	Approval (Remark3)	E: TUV, CCC; K: UL489		
12	Customer code	Consists of at least 5 digits or letters		

Remark:

1. Circuit type A, switch only, current should be 50A or 100A. Type B, the code can be omitted.
2. For 3C approved breaker, delay type code use A2, default as medium delay.
3. Please contact manufacturer if you have other requirement.